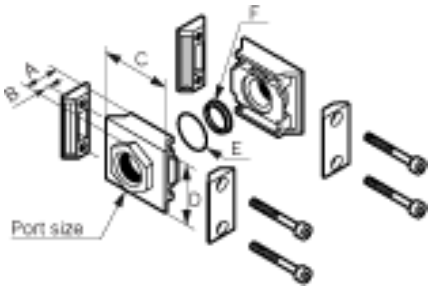
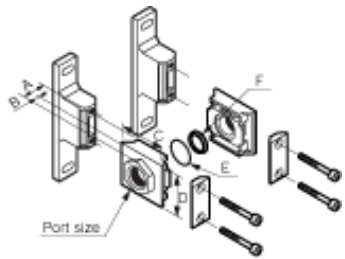


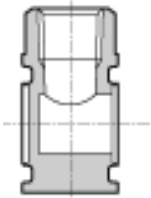
CKD FRL Basic Components Chart



**A400-(8,10,15,20,25)-W
Straight End Plate Kit**



**A400-(8,10,15,20,25)-W-B31W
Straight end Plate Kit**



**V3000 or V3301
Shut Off**

OR



Add after the port code for:
Nothing = Rpt or BSPT ports
"N" = NPT ports
"G" = BSPP ports
Example:
F3000-8-W 1/4 Rpt Filter
F3000-8N-W 1/4" NPT Filter
F3000-8G-W 1/4 BSPP Filter

3000 Series Components Options

A400-(8,10,15,20,25)-W end plate port set (1/4,3/8,1/2,3/4, or 1 ports)

***B310-W Wall mount Joiner Plate**

***C4000-J400-W Plain Joiner plate**

***D401-00-(8,10,15)-W-B31W 1/4, 3/8, 1/2 RPT Dist Block**

V3000-(8,10,15)-W Rpt Manual shut off valve(1/4, 3/8, or 1/2 ports)

OR

V3301-(08, 10, 15)-LS-3-S (3 = 24VDC, 4 = 12VDC , 5 = 110 VAC)

Solenoid shut off Valve (1/4, 3/8, or 1/2 ports)

***B310-W Wall mount Joiner Plate**

***C4000-J400-W Plain Joiner plate**

***D401-00-(8,10,15)-W-B31W 1/4, 3/8, 1/2 RPT Dist Block**

F3000-(8,10,15)-W Filter(1/4, 3/8,or 1/2 ports)

***B310-W Wall mount Joiner Plate**

***C4000-J400-W Plain Joiner plate**

***D401-00-(8,10,15)-W-B31W 1/4, 3/8, 1/2 RPT Dist Block**

Regulator R3000-(8,10,15)-W Regulator (1/4,3/8, or 1/2 ports)

***B310-W Wall mount Joiner Plate**

***C4000-J400-W Plain Joiner plate**

***D401-00-(8,10,15)-W-B31W 1/4, 3/8, 1/2 RPT Dist Block**

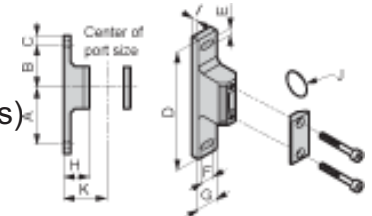
Lubricator L3000-(8,10,15)-W Lubricator(1/4, 3/8, or 1/2 ports)

***B310-W Wall mount Joiner Plate**

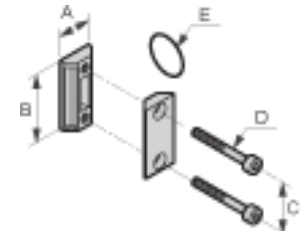
***C4000-J400-W Plain Joiner plate**

***D401-00-(8,10,15)-W-B31W 1/4, 3/8, 1/2 RPT Dist Block**

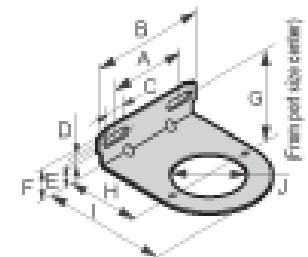
A400-(8,10,15,20,25)-W end plate port (1/4,3/8,1/2,3/4,1 ports)



B310-W



C4000-J400-W



B330

**A401-(8,10,15)-W- B31W 90°
angle entry end port**



**D401-00-(8,10,15)-W-B31W
Distributor Block**

* = select option for this station